

QuickBooks Conversion to NolaPro

The NolaPro QuickBooks Converter allows you to bring in the following data from QuickBooks.

- General Ledger Accounts
- Beginning GL Balances
- Customers
- Invoices
- Vendors
- Bills
- Sales Taxes
- Price Levels
- Items
- Employees
- Invoice Terms
- Sales Reps

These versions of QuickBooks are supported.

- U.S. editions of QuickBooks Financial Software products
- QuickBooks Enterprise Solutions (2015 or later)
- QuickBooks Premier (2015 or later)
- QuickBooks Pro (2015 or later)
- Canadian editions of QuickBooks (2015 or later)
- UK editions of QuickBooks (2015 or later)

The converter won't work directly with the *QuickBooks Online* version. You will need to download a backup of your QuickBooks Online site to your computer and restore it to a desktop version (you can download a free trial of QuickBooks).

Follow these important steps to successfully transfer your data.

Update or Install NolaPro

You will need to be sure that you are using a version of NolaPro that contains the QuickBooks import module. Your version of NolaPro needs to be 5.0.24308 or higher. Visit nolapro.com for downloads.

**** IMPORTANT**** NolaPro must be installed on the same machine that is running QuickBooks, or your NolaPro installation must be network accessible by the QuickBooks machine.

Enable the QuickBooks Import Feature

If you are running a *Starter* license, you'd need to first upgrade your license type to *Enterprise*. This can be done from within NolaPro by going to Admin -> System -> NolaPro License.

For most installations, the *QuickBooks(TM) Converter (US)* feature will be enabled by default. If it is not, you can enable this by going to Tools -> System -> Add-ons.



Install the QuickBooks Web Connector

On the same machine that is running your QuickBooks installation, you will need to install the QuickBooks Web Connector (QBWC) application.

- 1) Download the latest version from this web page: [link](#)
- 2) Extract the ZIP file's content.
- 3) Run the *QBWebConnectorinstaller.exe* file.
- 4) Follow the steps shown in the installation wizard.



Open QuickBooks and the Web Connector

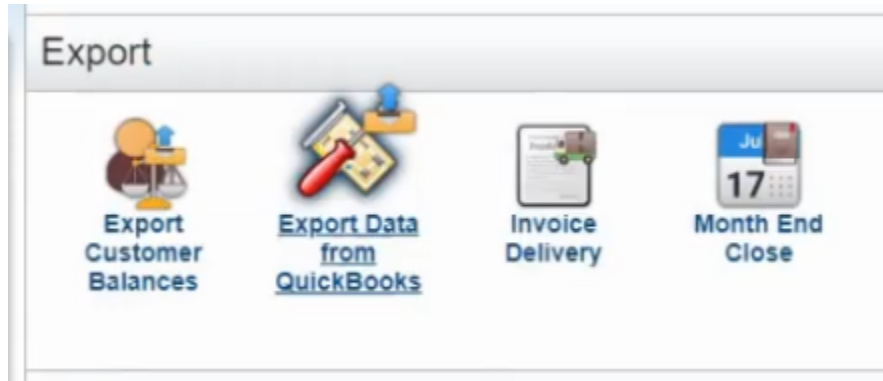
- 1) Open the Quickbooks file you want to export from.

2) Run the Quickbooks Web Connector application.

Note: It is important that both of these are running at the same time, on the same system.

Link NolaPro to the QuickBooks Web Connector Application

1) In NolaPro, go to Tools -> Export -> Export Data from Quickbooks

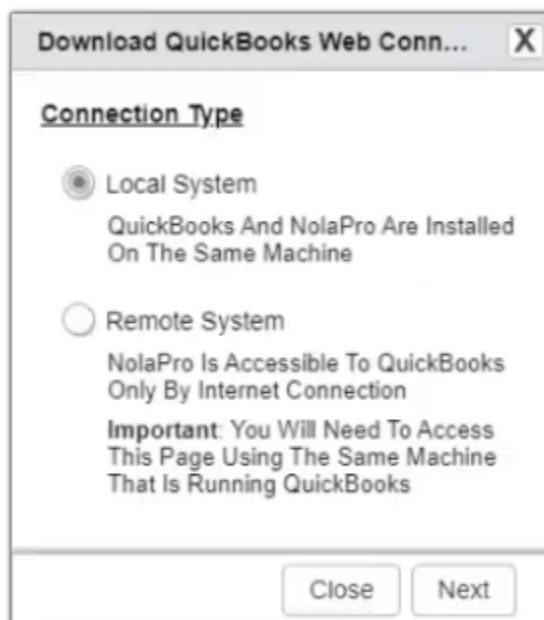


2) Click the button Download QuickBooks Web Connector File

Start A New QuickBooks Export



3) Select your connection type when prompted. Use the option for *Local System* when NolaPro is installed on the same machine that is running QuickBooks. Otherwise, select *Remote System*.



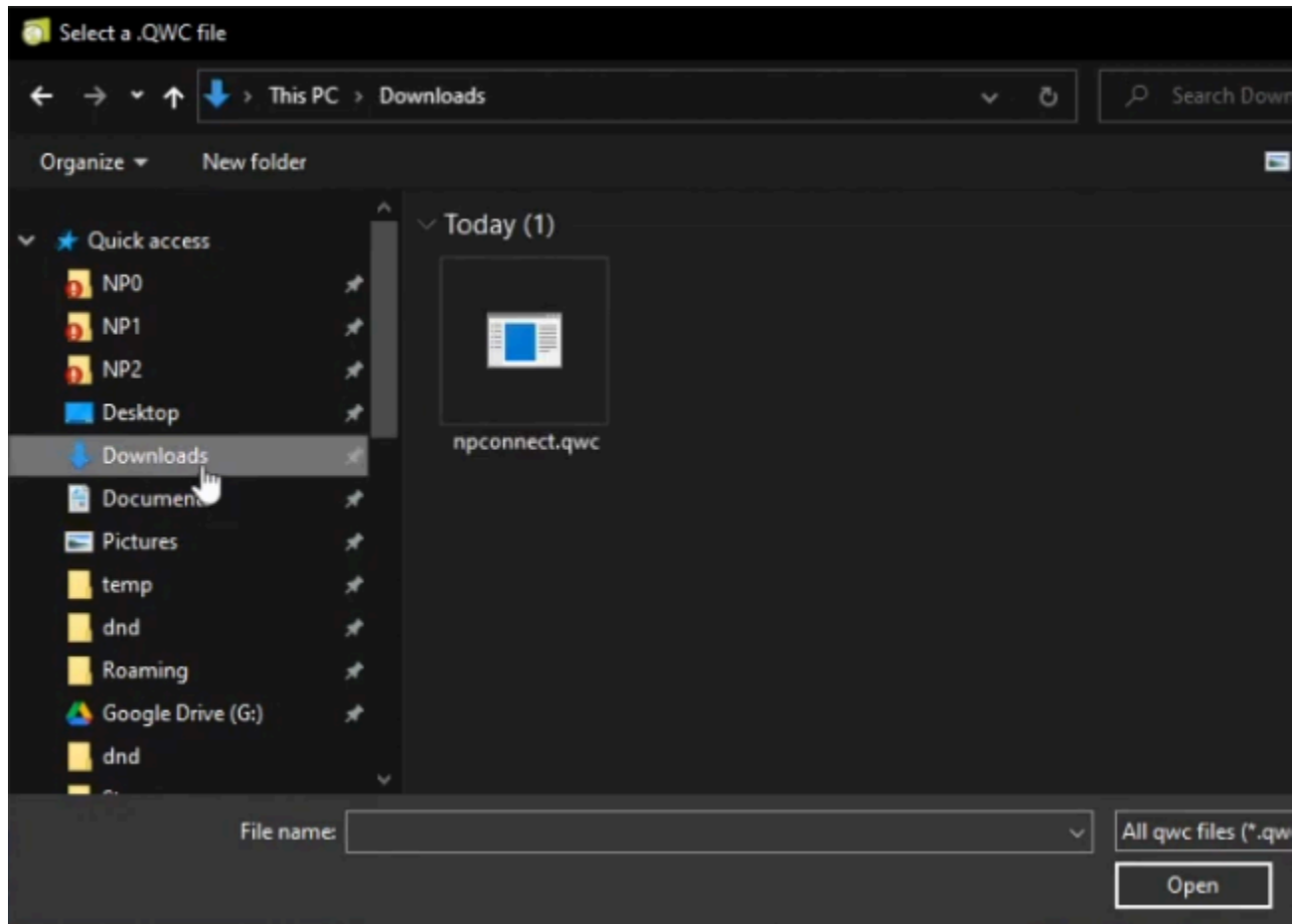
- 4) Press Next, and the download of the web connector file will begin. You will also be shown a password. Write this down, or copy and paste it into a text editor for use later.



- 5) Open the *QuickBooks Web Connector*, and click the *Add an Application* button.



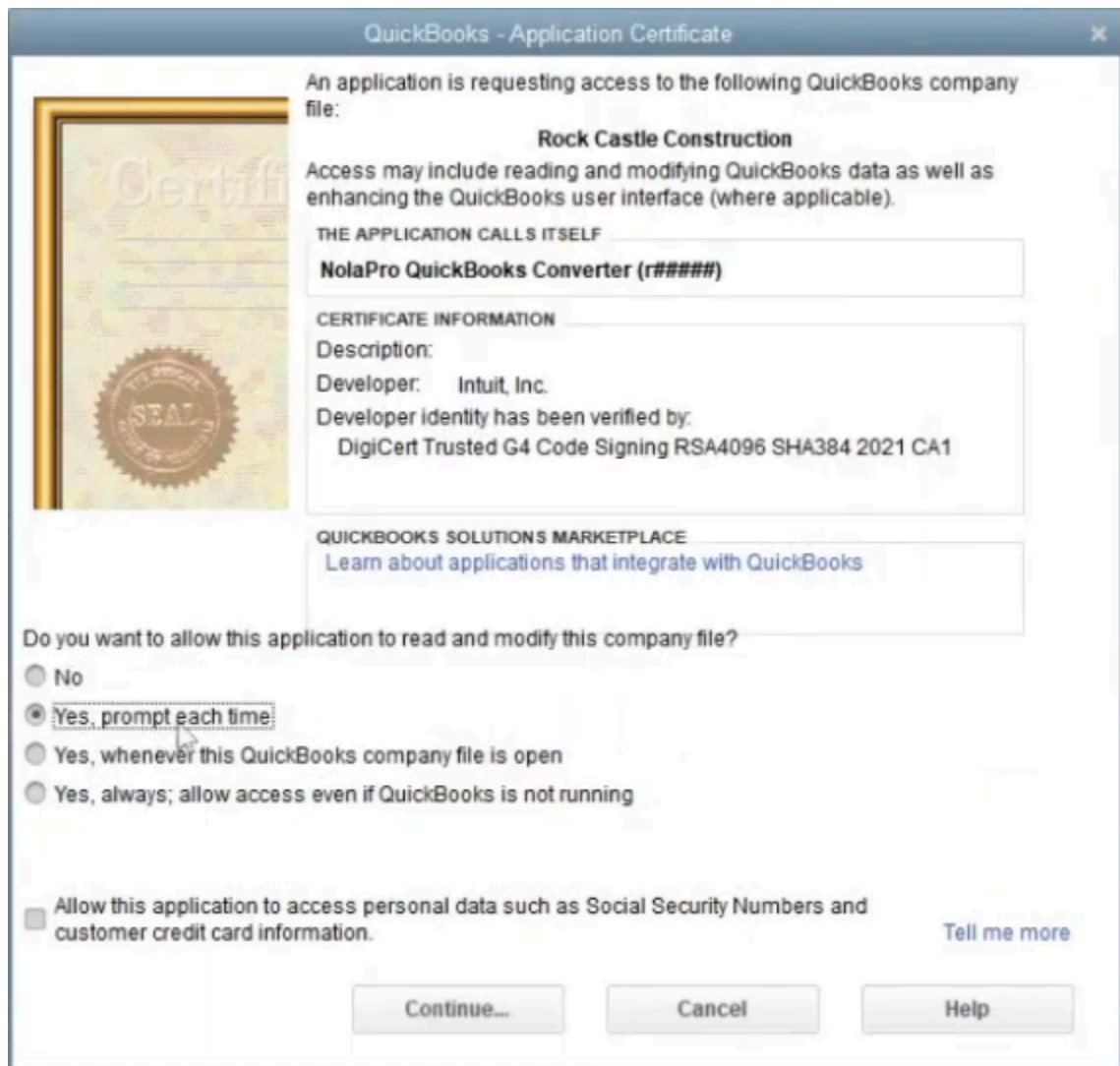
6) Select the file downloaded in step #4.



7) When prompted, press **OK** to confirm the new web service.

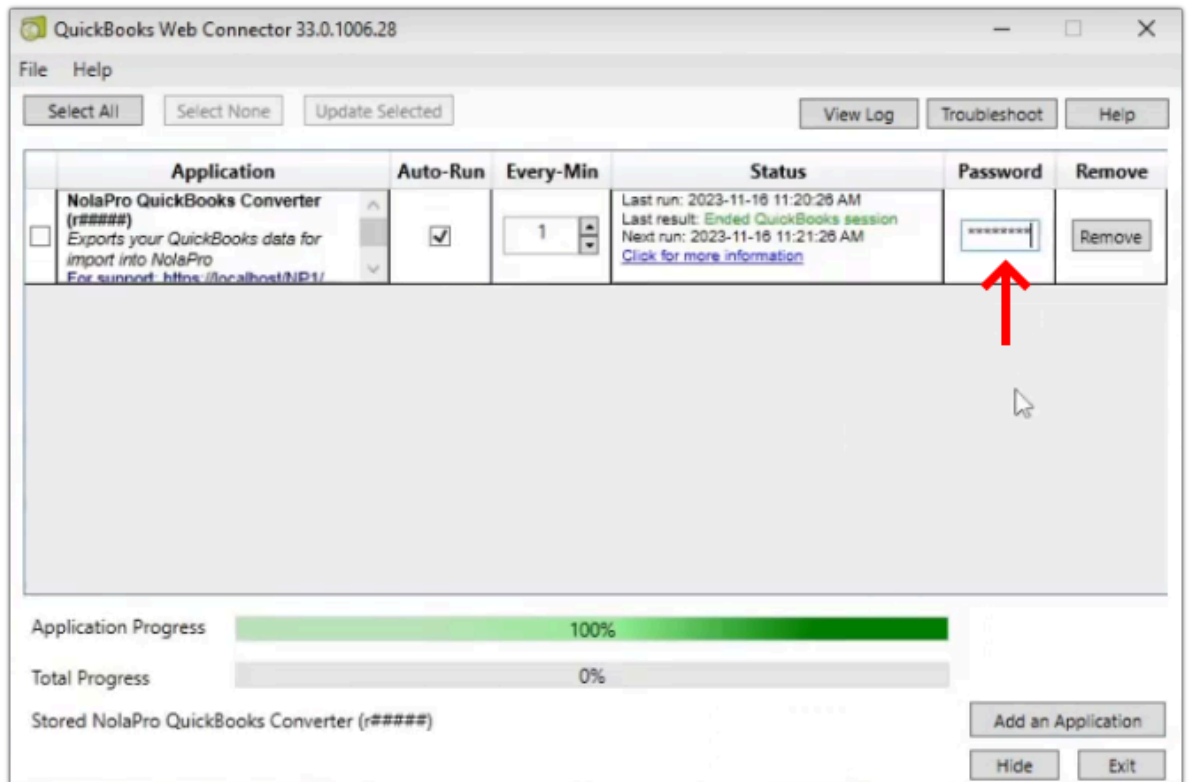


- 8) A new dialog will now appear within *QuickBooks*. Confirm the application and then press *Continue* and then *Done*.



- 9) Go back to the *QuickBooks Web Connector* application, and you should now see a new line added for NolaPro. In the password column, enter the password that was given by

NolaPro in step #4.



Use NolaPro to Export data from QuickBooks and Import

- 1) Using NolaPro, go back to the *Export Data from QuickBooks* page (Tools -> Export -> Export Data From QuickBooks) and then click the button labeled *Submit Export Request To QuickBooks Web Connector*.



- 2) Wait for the spinners to clear in the *Pending Export Requests* table.



Go To Import Page

Pending Export Requests		
Module	Date Submitted	
Account	2023-11-16 19:40:53	
Bill	2023-11-16 19:40:53	2023-11-16 19:41:16
Check	2023-11-16 19:40:53	2023-11-16 19:41:08
Customer	2023-11-16 19:40:53	
Employee	2023-11-16 19:40:53	
Invoice	2023-11-16 19:40:53	2023-11-16 19:41:18
Item	2023-11-16 19:40:53	
ItemSalesTax	2023-11-16 19:40:53	2023-11-16 19:41:15
PriceLevel	2023-11-16 19:40:53	
SalesRep	2023-11-16 19:40:53	2023-11-16 19:41:11
Terms	2023-11-16 19:40:53	
Vendor	2023-11-16 19:40:53	

- 3) After, you'll be taken to the import page. Press the *Import All* button to start.

Import Import QuickBooks Files

Back / Export Imported Selected Imported All Reset Progress

Export Data From QuickBooks And Import Into NolaPro								
#	Import Data	Read From QuickBooks				Write To NolaPro		
		Status	Queued	Elapsed Time	View	Status	Queued	Elapsed Time
1	<input checked="" type="checkbox"/> Company							
2	<input checked="" type="checkbox"/> GL Accounts		2023-11-16 19:40:53	35s				
3	<input checked="" type="checkbox"/> System Settings							
4	<input checked="" type="checkbox"/> Customer Groups							
5	<input checked="" type="checkbox"/> Item Categories							

Note: Depending on your system and amount of data, this process may take a while to complete.

Check Out Your Data

After you have brought in all of your data, browse through NolaPro to see if it looks like it should (for example Billing -> Reports -> Aging Report or Summary of Invoices, Payables -> Reports -> Aging – Summary, Orders -> Customers -> Customer List, Payables -> Vendors -> Vendor List, Payroll -> Employees -> General Info).

QuickBooks does not allow exporting the historical account balances along with each GL Account so you will want to bring up your balance sheet (Ledger -> Reports -> Balance Sheet) to see if your accounts balance. You can compare this with your QuickBooks balance sheet. To make adjustments to any NolaPro beginning balance total go to Ledger -> Journal Entries -> Edit Journal Entries. Search for the current day. Edit the one labeled QuickBooks GL Account Import.

Enjoy Using NolaPro

This completes the QuickBooks Conversion process. You can now use NolaPro to manage your business and access your data from anywhere with an Internet connection rather than being tied to one PC.